

# LateralX LX5+: I'm having difficulty assembling my machine ID: 13304.1

Follow this troubleshooting guide to help resolve some assembly issues with the BowFlex LateralX LX5+.

Some common complaints may include:

- Handlebar does not fit
- Mast cable does not connect
- Cannot assemble handlebar or mast cables

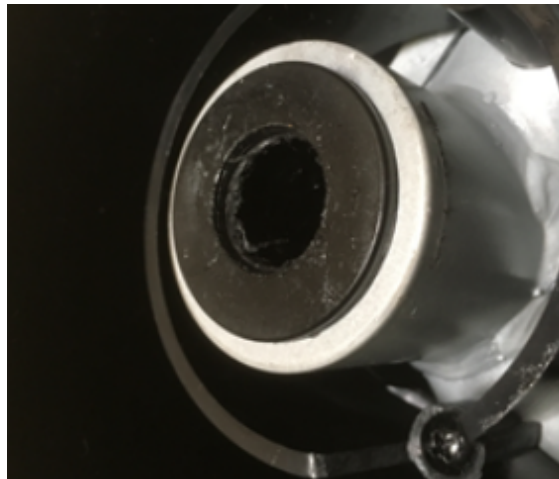
## Follow these steps to troubleshoot the issue

*Tools you may need:*

Phillips head screwdriver (if removing console from mast)

1. If you are having difficulty installing the handlebars, check if the bushing on the handlebar (**reference 1**) is too small for the handlebar to fit into. If the bushing is too small, [order a Left or Right Handlebar](#) (whichever is affected) [\[13304.A\]](#).

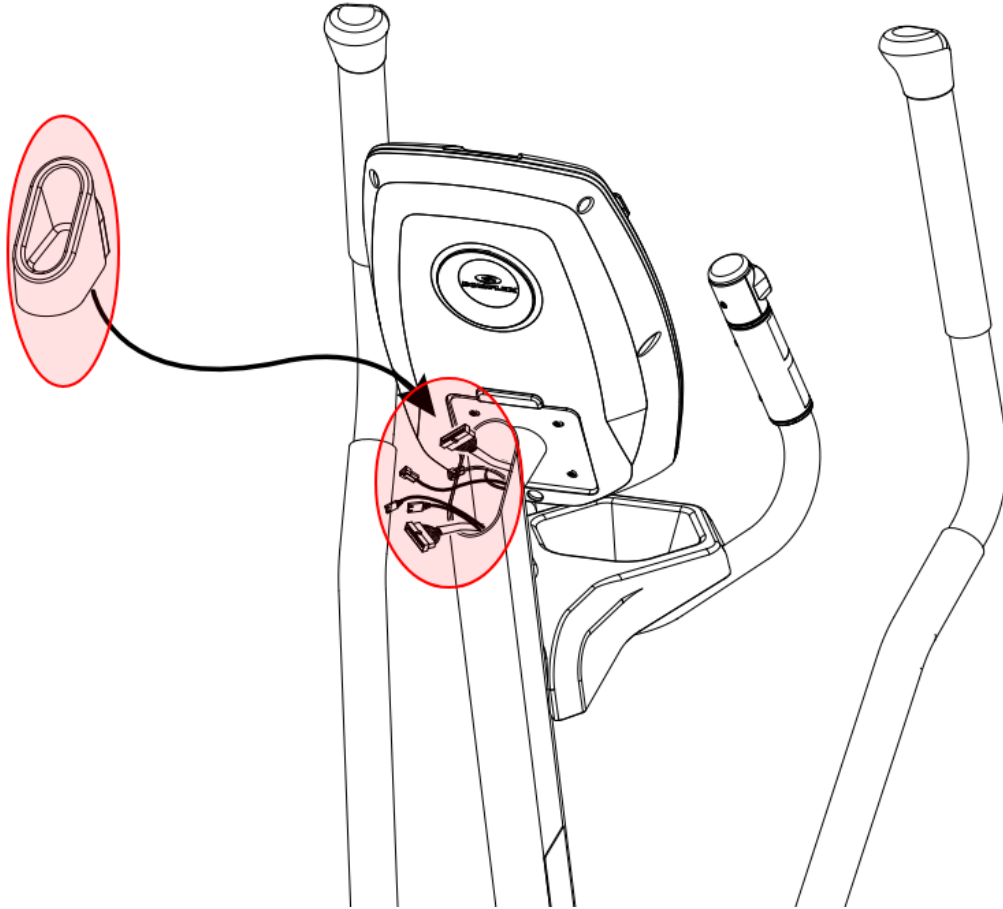
**(Reference 1)**



*The handlebar inserts into the handlebar bushing, shown here.*

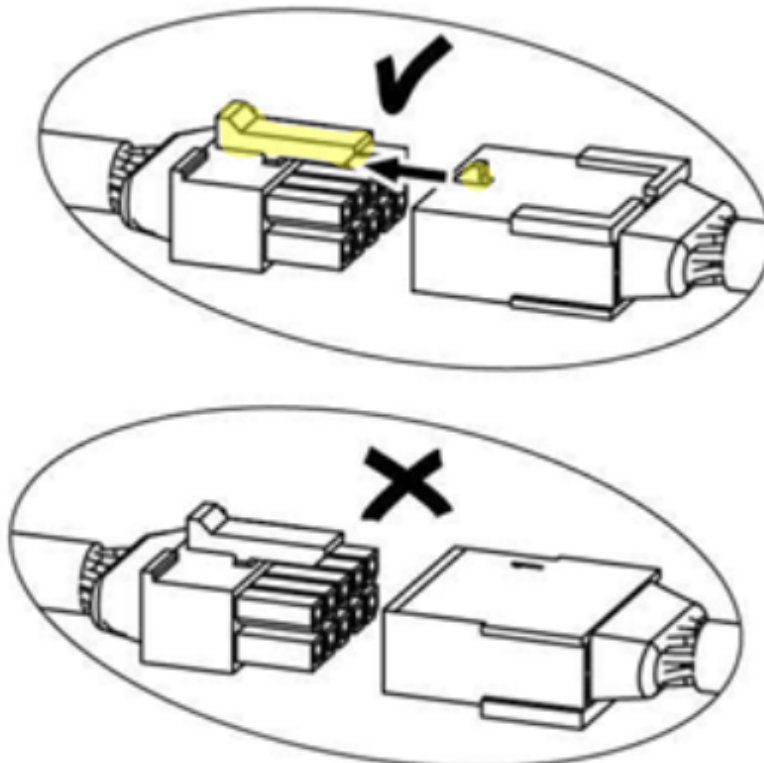
2. If you are having difficulty installing the mast cables, remove the mast end cap behind the console to inspect the cables (**reference 2**). Check the cable connectors carefully. Each cable should look different and there should be a male and female connector for each set. The tabs on the connectors should line up and audibly click when firmly pressed together (**reference 3**) [\[13304.B\]](#). If the connectors are all the same or cannot be connected, [order Mast Cables \[13304.C\]](#).

**(Reference 2)**



*Remove the end cap, circled on the left, from the console mast and inspect the cables inside the console mast.*

**(Reference 3)**



*Line up the tabs on the connectors and press them together until you hear a small click.*

***Need to order replacement parts?***

1 Parts Reference Table

<i>Part Description</i>	<i>Part SKU</i>
<b>Left Handlebar</b>	<b>8014282</b>
<b>Mast Cables</b>	<b>8018408</b>
<b>Right Handlebar</b>	<b>8014281</b>

2 Contact Tech Team / Advanced Troubleshooting

***If the issue was not resolved in the steps listed, contact the Tech Team or send an Advanced Troubleshooting case.***

**Submit a Case with case type Advanced Troubleshooting**