

LateralX LX3: I'm having difficulty assembling my machine ID: 13255.1

Follow this troubleshooting guide to help resolve some assembly issues with the BowFlex LateralX LX3.

Some common complaints may include:

- Handlebar does not fit
- Mast cable does not connect
- Cannot assemble handlebar or mast cables

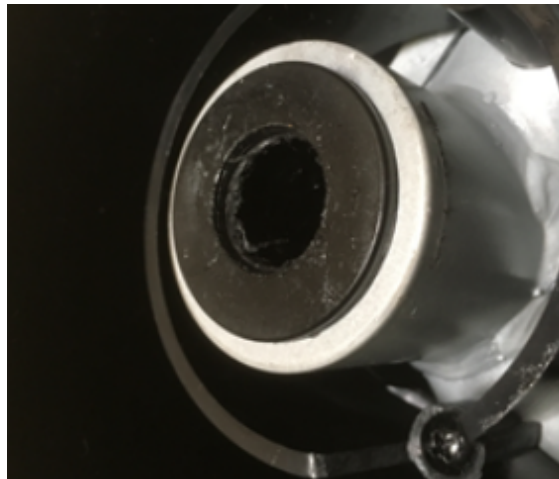
Follow these steps to troubleshoot the issue

Tools you may need:

Phillips head screwdriver (if removing console from mast)

1. If you are having difficulty installing the handlebars, check if the bushing on the handlebar (**reference 1**) is too small for the handlebar to fit into. If the bushing is too small, [order a Left or Right Handlebar](#) (whichever is affected) [\[13255.A\]](#).

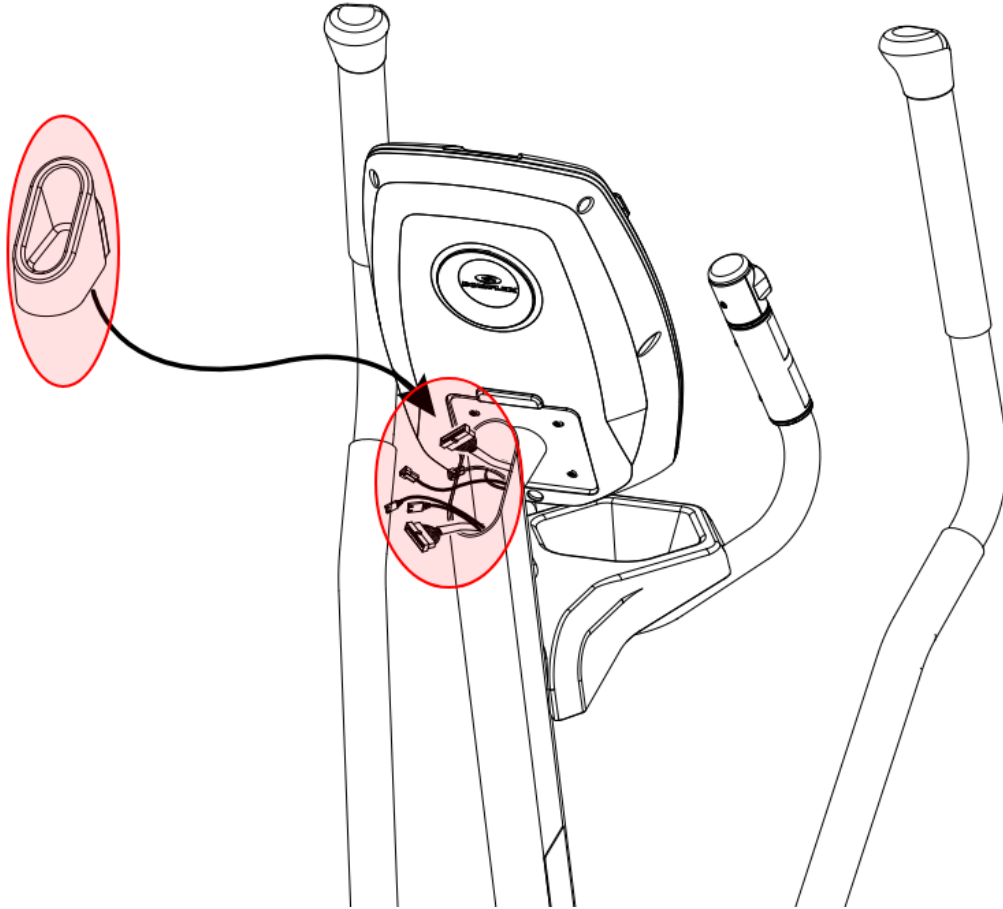
(Reference 1)



The handlebar inserts into the handlebar bushing, shown here.

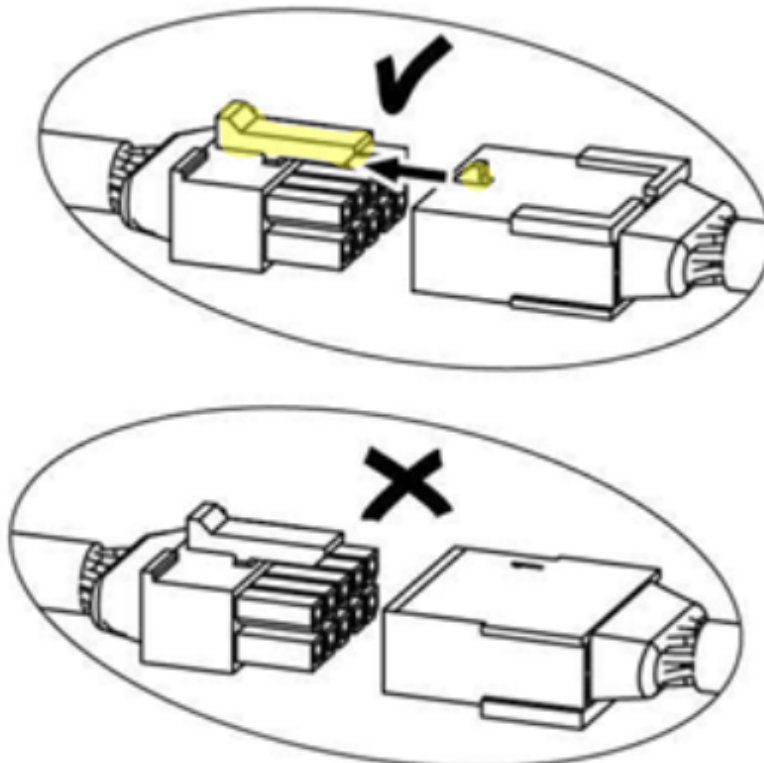
2. If you are having difficulty installing the mast cables, remove the mast end cap behind the console to inspect the cables (**reference 2**). Check the cable connectors carefully. Each cable should look different and there should be a male and female connector for each set. The tabs on the connectors should line up and audibly click when firmly pressed together (**reference 3**) [\[13255.B\]](#). If the connectors are all the same or cannot be connected, [order Mast Cables](#) [\[13255.C\]](#).

(Reference 2)



Remove the end cap, circled on the left, from the console mast and inspect the cables inside the console mast.

(Reference 3)



Line up the tabs on the connectors and press them together until you hear a small click.

Need to order replacement parts?

1 Parts Reference Table

<i>Part Description</i>	<i>Part SKU</i>
Left Handlebar	8014274
Mast Cables	8018410
Right Handlebar	8014273

2 Contact Tech Team / Advanced Troubleshooting

If the issue was not resolved in the steps listed, contact the Tech Team or send an Advanced Troubleshooting case.

Submit a Case with case type Advanced Troubleshooting